

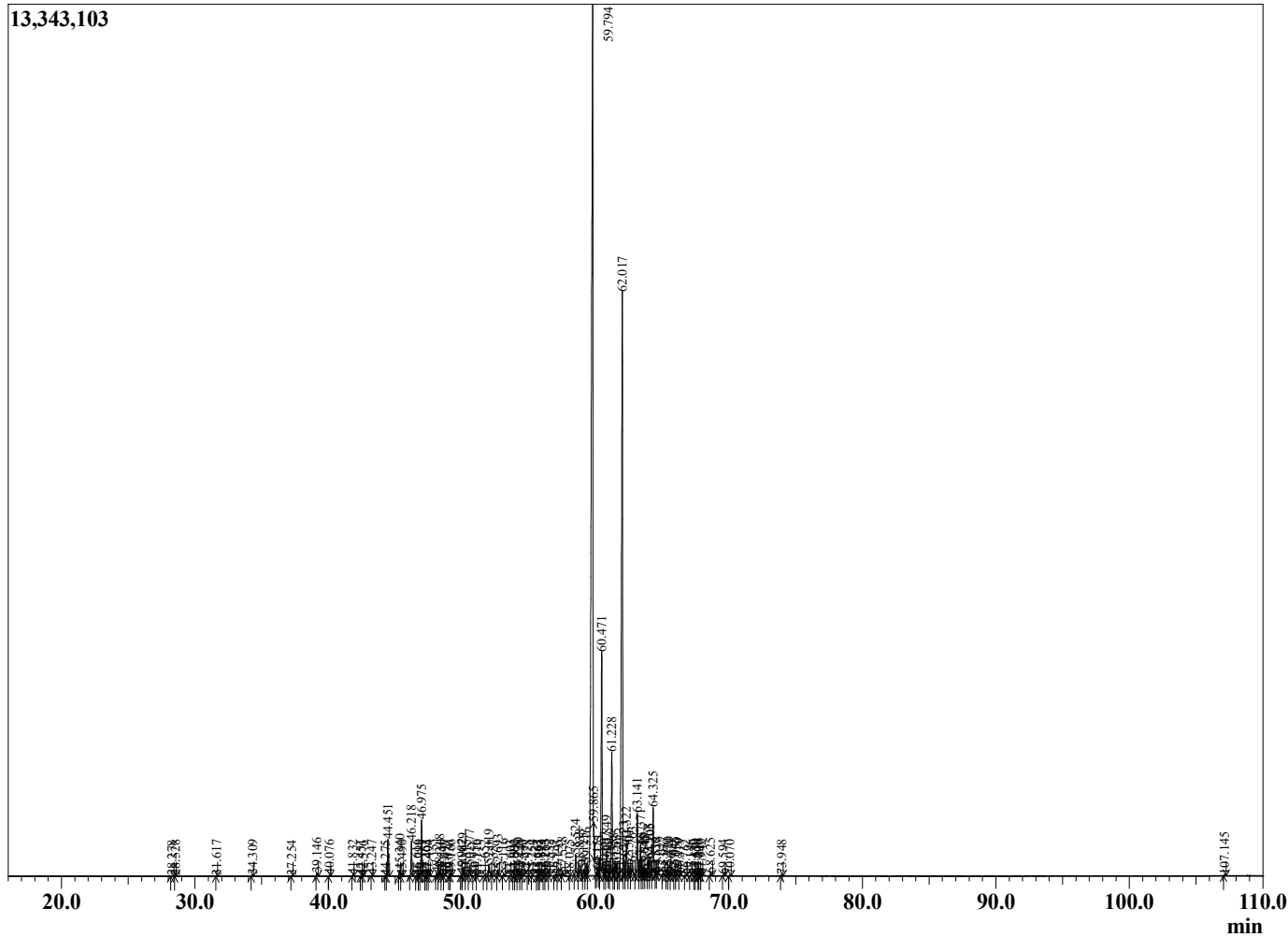
Sample Information

Sample Type : Essential Oil
 Sample Name : Santalum album
 Injection Volume : 0.10

Sandalwood
 Lot# IDC37-CH
 Country: India



Chromatogram Santalum album



| R.Time | Name | Area% |
|--------|--|-------|
| 10.051 | Santene | 0.02 |
| 28.278 | N-Furfuryl pyrrole | 0.01 |
| 28.528 | Terpinen-4-ol | 0.01 |
| 31.617 | Unidentified | 0.02 |
| 34.309 | Teresantalic acid analogue | 0.03 |
| 37.254 | Unidentified | 0.01 |
| 39.146 | Santalal analogue | 0.08 |
| 40.076 | trans-alpha-Santalal | 0.03 |
| 41.832 | Unidentified | 0.03 |
| 42.451 | 7-epi-Sesquithujene | 0.01 |
| 42.576 | beta-Elemene | 0.01 |
| 43.247 | nortricyclo-eka-Santalal acid | 0.02 |
| 44.275 | alpha-Cedrene | 0.01 |
| 44.451 | alpha-Santalene | 1.04 |
| 45.340 | trans-alpha-Bergamotene | 0.16 |
| 45.490 | Unidentified + delta-Elemene | 0.02 |
| 46.218 | epi-beta-Santalene | 0.99 |
| 46.616 | Sesquisabinene | 0.02 |
| 46.798 | Unidentified | 0.01 |
| 46.975 | beta-Santalene | 1.56 |
| 47.262 | Unidentified | 0.00 |
| 47.405 | alpha-Neocallitropsene | 0.02 |
| 47.494 | alpha-Acoradiene + Unidentified | 0.02 |
| 48.121 | gamma-Curcumene | 0.08 |
| 48.318 | Ar-Curcumene | 0.16 |
| 48.510 | trans-beta-Bergamotene | 0.03 |
| 48.697 | beta-Vetispiorene | 0.02 |
| 49.030 | Unidentified | 0.01 |
| 49.166 | tricyclo-eka-Santalal acid analogue | 0.03 |
| 49.982 | beta-Bisabolene | 0.05 |
| 50.079 | beta-Curcumene | 0.23 |
| 50.315 | Unidentified | 0.01 |
| 50.577 | alpha-Teresantalic acid | 0.30 |
| 50.956 | Unidentified | 0.03 |
| 51.116 | Bisabolene isomer | 0.01 |
| 51.652 | Unidentified | 0.02 |
| 52.019 | Unidentified + Sesquisabinene hydrate analog | 0.43 |
| 52.357 | Elemol | 0.02 |
| 52.693 | Ekasantalic acid analogue | 0.18 |
| 53.116 | Santalal analogue | 0.06 |
| 53.603 | Dendaralasin | 0.01 |
| 53.891 | Teresantalic acid analogue | 0.03 |
| 54.000 | Unidentified | 0.01 |
| 54.220 | trans-Sesquisabinene hydrate | 0.07 |
| 54.440 | Unidentified | 0.03 |
| 54.533 | Unidentified | 0.04 |
| 54.928 | Unidentified | 0.01 |
| 55.254 | Unidentified | 0.02 |
| 55.662 | Unidentified | 0.03 |
| 55.755 | Unidentified | 0.02 |
| 55.893 | Unidentified | 0.02 |
| 56.155 | Unidentified | 0.03 |
| 56.263 | Unidentified | 0.06 |
| 56.532 | Unidentified | 0.01 |
| 56.937 | Unidentified | 0.03 |
| 57.195 | Unidentified | 0.06 |

| R.Time | Name | Area% |
|---------|---------------------------------|--------|
| 57.538 | alpha-Acorenol | 0.12 |
| 58.075 | Hinesol | 0.00 |
| 58.524 | Khusilal | 0.68 |
| 58.838 | trans-alpha-Santalal | 0.36 |
| 59.125 | cis-alpha-Santalal analogue | 0.20 |
| 59.316 | Unidentified | 0.38 |
| 59.794 | cis-alpha-Santalol | 46.72 |
| 59.865 | cis-alpha-Santalal | 0.13 |
| 60.151 | Unidentified | 0.09 |
| 60.275 | alpha-Bisabolol | 0.01 |
| 60.471 | cis-alpha-trans-Bergamotol | 7.38 |
| 60.697 | alpha-Santalol analogue | 0.28 |
| 60.849 | trans-alpha-Santalol | 0.76 |
| 60.980 | Unidentified | 0.00 |
| 61.228 | cis-epi-beta-Santalol | 3.73 |
| 61.358 | Unidentified | 0.20 |
| 61.535 | cis-alpha-trans-Bergamotol | 0.52 |
| 61.720 | Unidentified | 0.02 |
| 62.017 | cis-beta-Santalol | 22.50 |
| 62.123 | trans-epi-beta-Santalol | 0.55 |
| 62.322 | cis-Nuciferol | 1.05 |
| 62.501 | cis-beta-Santalol | 0.32 |
| 62.763 | Unidentified | 0.47 |
| 63.141 | trans-beta-Santalol | 1.80 |
| 63.371 | Unidentified | 0.95 |
| 63.467 | Bergamotol analogue | 0.34 |
| 63.645 | Unidentified | 0.13 |
| 63.747 | trans-alpha-trans-Bergamotol | 0.18 |
| 63.968 | trans-Nuciferol | 0.45 |
| 64.105 | Unidentified | 0.58 |
| 64.325 | cis-Lanceol | 2.05 |
| 64.530 | Unidentified | 0.03 |
| 64.618 | Unidentified | 0.06 |
| 65.077 | alpha-trans-Bergamotol analogue | 0.07 |
| 65.370 | Unidentified | 0.03 |
| 65.470 | Unidentified | 0.09 |
| 65.674 | Unidentified | 0.01 |
| 65.945 | Lanceol isomer | 0.09 |
| 66.056 | Unidentified | 0.06 |
| 66.319 | Unidentified | 0.03 |
| 66.762 | Unidentified | 0.02 |
| 67.146 | cis-beta-Santalol analogue | 0.02 |
| 67.430 | Unidentified | 0.01 |
| 67.559 | Unidentified | 0.04 |
| 67.700 | Unidentified | 0.01 |
| 67.810 | Unidentified | 0.03 |
| 67.942 | Unidentified | 0.02 |
| 68.625 | Unidentified | 0.07 |
| 69.594 | Unidentified | 0.03 |
| 70.070 | Unidentified | 0.02 |
| 73.948 | Unidentified | 0.03 |
| 107.145 | Unidentified | 0.03 |
| | | 100.00 |